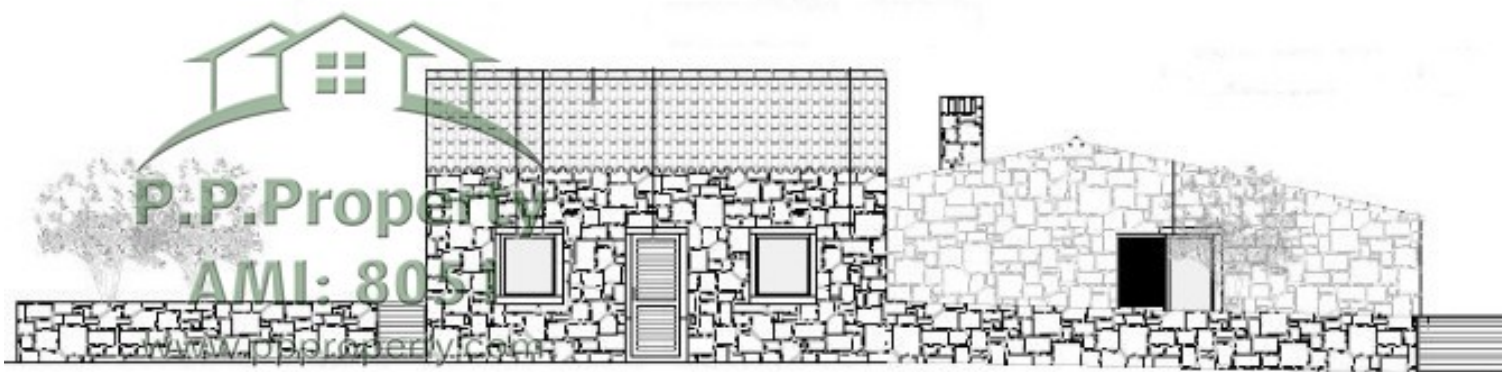


Stone house with approved project, located in a typical village between Tomar and Ferreira do Zêzere



| Reference Id | Area Build | Land Size | Price | Bedrooms | Bathrooms |
|--------------|--------------------|--------------------|---------|----------|-----------|
| TZ819 | 165 M ² | 710 M ² | €80,000 | 3 | 2 |

Stone house with approved project, located in a typical village between Tomar and Ferreira do Zêzere

Fantastic stone house and stone annex has an approved project to restore with a total area of 165 m², it is inserted in a land with 710.00 m². It is in a typical and quiet village 20 minutes from Tomar, and Ferreira do Zêzere and close to the river beaches where several residents live and some foreigners who chose this beautiful village to live.

The project is approved to make a ground floor with a living room and kitchen in open space with 60m² with a support porch with 22m² and a bathroom, in a more private area of the house there is a bedroom and a living room. This space can be converted into 3 bedrooms. In the attic you can make another bedroom and a private bathroom.

On the ground there is a very beautiful stone annex that can be recovered to support a swimming pool that you can build.

This property has a huge potential to be able to rebuild the stone houses as many of them are already in the village and you can transform this house into a beautiful country house to spend your holidays or even to live full time.

The house is served by an asphalt road, where there is water and electricity that can be connected.

LOCATION

The property is in a small village about 20 minutes from the village of Ferreira do Zêzere and 20 minutes from the historical town of Tomar, which has supermarkets, shops, cafes, restaurants, health center, schools, a weekly market, swimming pools and the historic Convent of the Christ and Castle built by the Knights Templar in the 12th century and is classified as a World Heritage Site by Unesco.

The river beach of Agroal with its famous thermal water, this beach has the blue flag is only 10 minutes away,

To the Lake of the Dam of Bode Castle is only about 30 minutes away. This lake is popular for all kinds of water sports activities. The lake is also a paradise for wildlife with very pure water and there are several river beaches near the property where you can relax in the sun.

Access to the highway is about 20 minutes, where you arrive at Lisbon airport in an hour and a half, although it is possible to use the train or bus for this trip. The sea coast is about an hour and a half by car where you have beautiful beaches such as Nazaré, ideal for surf lovers and other sea sports. Lisbon airport is served by several low-cost airlines that operate scheduled flights between Portugal and the United Kingdom and other European countries.